

## MODEL P-5100

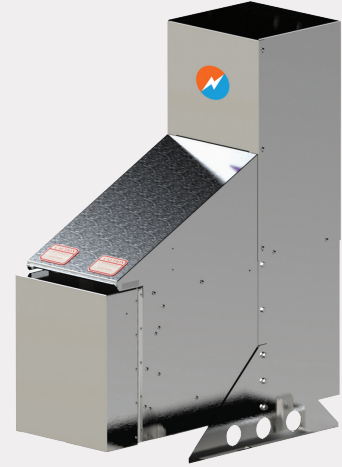
The Model P-5100 Thermoelectric Generator contains no moving parts. A reliable, low-maintenance source of DC power for any application where regular utilities are unavailable or unreliable.

### KEY FEATURES:

- ✓ Automatic Spark Ignition (SI)
- ✓ Automatic Fuel Shut-Off (SO)
- ✓ Fuel Filter
- ✓ Low Voltage Alarm Contacts (VSR)
- ✓ Reverse Current Protection
- ✓ API 12N Flame Arrestor (Natural Gas Only)
- ✓ Certified to CSA Std. T.I.L. R-10; CE

### OPTIONAL FEATURES:

- ✓ Remote Start
- ✓ Corrosive Environmental Fuel System
- ✓ Cathodic Protection Interface
- ✓ Converter Box
- ✓ Pole Mount or Bench Stand



## SPECIFICATIONS

### POWER SPECIFICATIONS

#### POWER RATING AT 20°C (68°F)

100 Watts @ 14 Volts      100 Watts @ 27 Volts  
80 Watts @ 54 Volts

### ELECTRICAL

#### OUTPUT ADJUSTMENT RANGE

12 Volts      12–18 Volts  
24 Volts      24–30 Volts  
48 Volts      53–57 Volts

**Note:** 12/24 VDC Models: Terminal block accepts up to 8 AWG wire. Opening for 3/4" conduit in base of cabinet.  
48 VDC: Terminal block accepts up to 4 AWG wire.

### FUEL REQUIREMENTS

\*Gas factory options

#### NATURAL GAS

9.4m<sup>3</sup>/day (332 Sft<sup>3</sup>/day)  
1000 BTU/Sft<sup>3</sup> (37.7 MJ/Sm<sup>3</sup>) gas  
\*1200–1500 BTU/Sft<sup>3</sup>  
(45.2–56.5) MJ/Sm<sup>3</sup>) gas  
max 115 mg/Sm<sup>3</sup> (~170 ppmw) H<sub>2</sub>S  
max 120 mg/Sm<sup>3</sup> H<sub>2</sub>O  
max 1% free O<sub>2</sub>

#### PROPANE

13.8 l/day (3.6 US gal/day)

#### NATURAL GAS/PROPANE

Max. Supply Pressure: 344 kPa (50 psi)  
Min. Supply Pressure: 103 kPa (15 psi)  
Fuel Connection: 1/4" MNPT Required

### ENVIRONMENTAL

#### AMBIENT OPERATING TEMPERATURE

Max. +55°C (130°F)  
Min. -40°C (-40°F)

#### OPERATING CONDITIONS

Unsheltered operation, shaded at >45°C (113°F)

Please contact GPT for operating conditions below -40°C or above +55°C.

### CONSTRUCTION

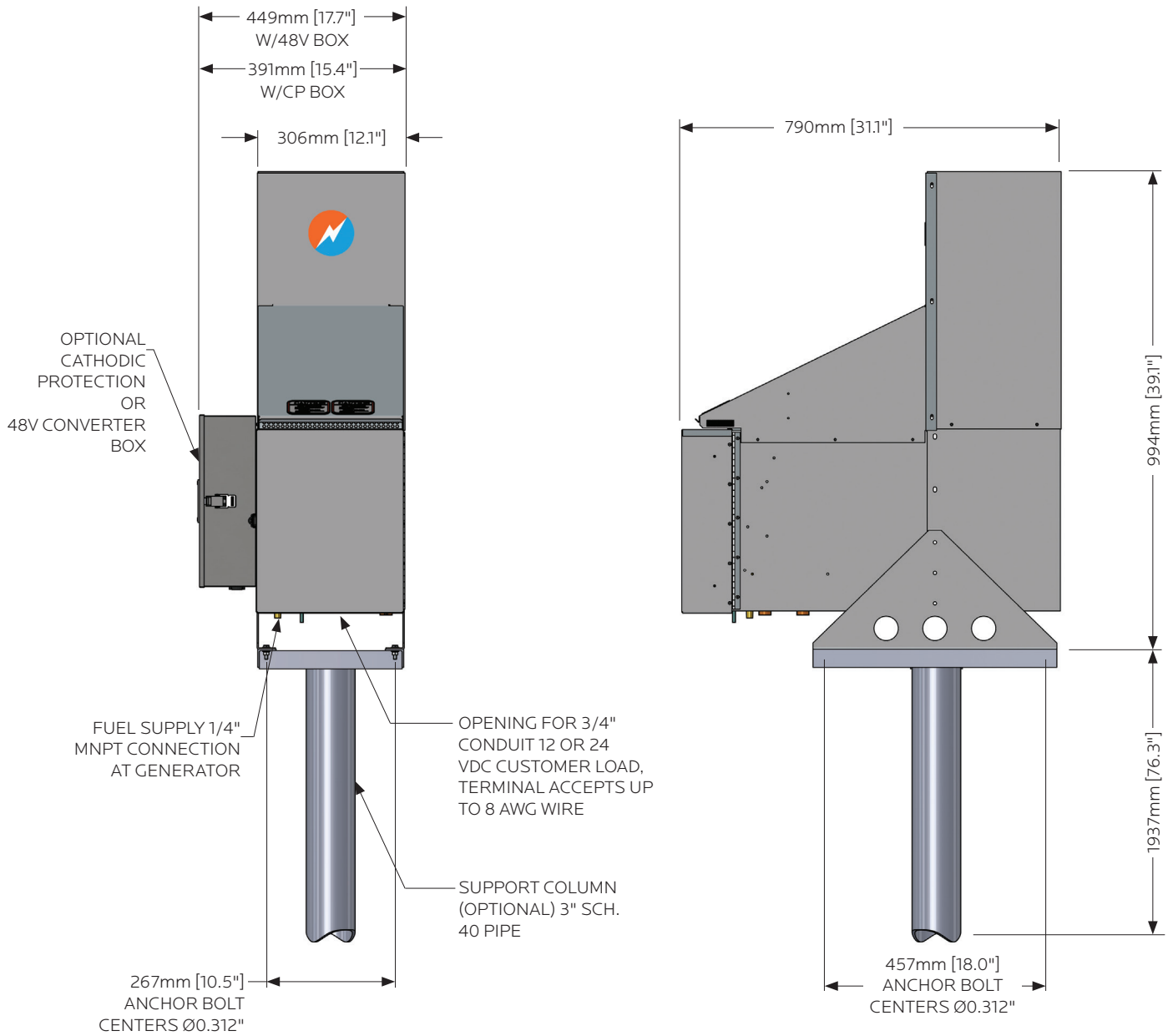
#### MATERIALS

Cabinet: 304 Stainless Steel (SS)  
Cooling Type: Natural Convection  
Fuel System: Brass, Aluminum & Stainless Steel

### NOTE

Specifications shown are for standard P-5100 configurations. Global Power Technologies (GPT) also offers customized products and systems to accommodate custom voltages, fuel supply systems and operating temperatures.

Specification data stated in this document is subject to change without notice. To verify these specifications are current, please contact your GPT sales representative.



**NOTES:**

Generator Weight: 60 kg [132 lb]  
 Certified to CSA Std. T.I.L. R-10; CE

**ISO**  
 9001:2008  
 REGISTERED

